



PLANNED AND EXISTING CHARACTERISTICS

Concrete contains multiple variations, just like in wood. Each piece of concrete has its own character.

There are a number of characteristics to be considered when polishing your concrete floor. Like wood or other natural materials, there is multiple variations in concrete.

Each piece of concrete has its own character, and it will always differ from place to place and could from pour to pour.

Below is a list of some of the characteristics that can be planned, and unplanned. We try our best to work with our clients and contractors in advance to help reduce the variations and set the right expectation for all our projects.

Planned Characteristics:

- Metal strips for aesthetic purposes.*
- Stained and exposed aggregate.*
- Imbedded recycled glass or other aggregates.*
- Integral coloring added to concrete.*

EXISTING CHARACTERISTICS:



**Different mixes separated by a joint
causing difference in color and
aggregate exposure.**



**Patched cracks or filled
expansion joints**



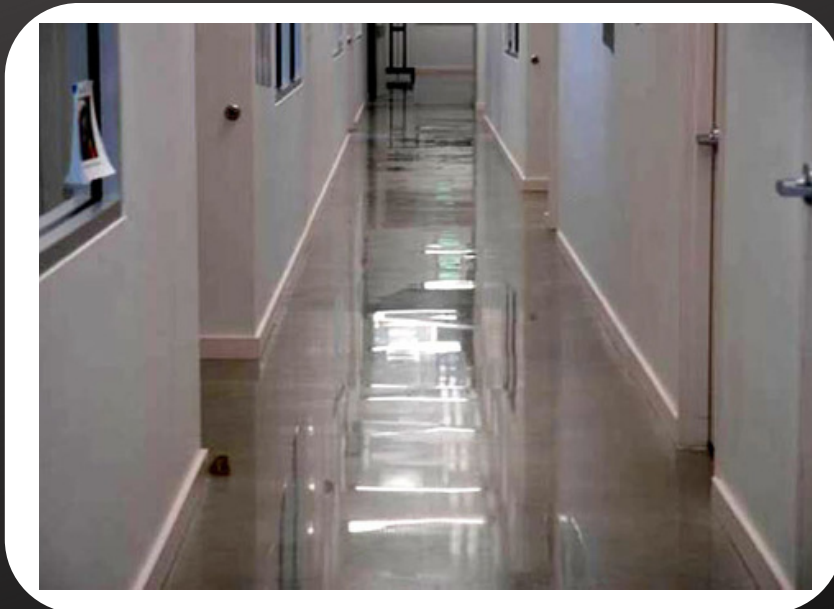
Surface crazing created by improper curing or a mix that dried too fast



Debris imbedded in the concrete (ex. wood chunks, foam, etc.)



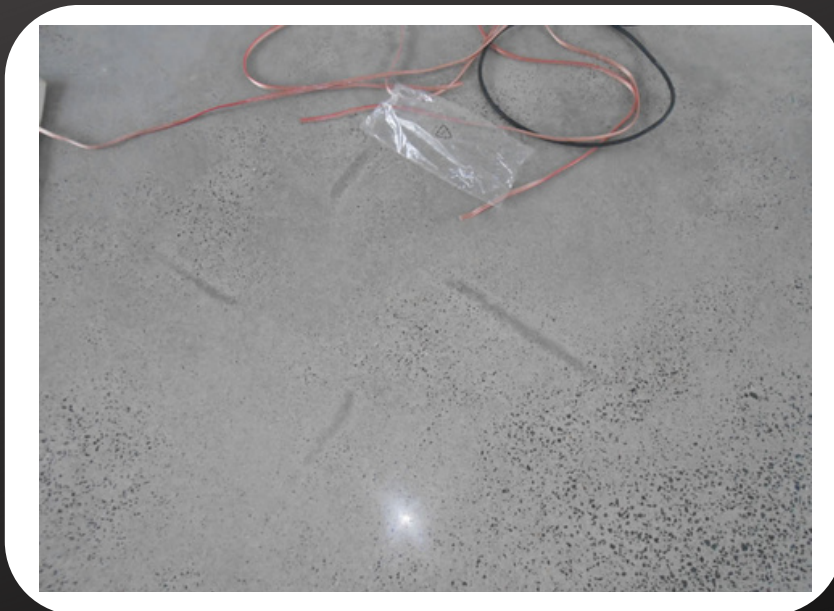
Exposed rebar from improper placement



Low Floor Flatness (low areas)



Improper floor protection



Helicopter or Screed marks- This is a very common phenomenon in slabs that were not poured with the intention of polishing



Varying Aggregate usually happens when a floor that hasn't been poured level.

Exposed foam on edges of slab

- Vapor barrier left on surface of concrete creating discoloration.*
- Stains on surface caused by chemicals, paint, caulking, spray foam etc. during building process.*
- Improper curing and or mix.*

We have the answers in with very affordable pricing and the most experienced **concrete polishing** contractors in the business!